










Rocky Mountain Creative Quilters

November 2008

Newsletter

RMCQ Meeting ~ Monday November 10th 2008 Putting the Frosting on the Quilt and Election of Officers

Our next meeting is Monday, November 10th. Your attendance is important, because we will vote on RMCQ's 2009 Officers. Bring your friends and pass this newsletter along to anyone who may be interested in RMCQ. Inside the newsletter this month:

-  Information about our November program as well as our upcoming programs is included on pages 2 and 3
-  A listing of upcoming events is provided on page 4, along with notices about our November Board meeting and our website
-  Announcements, class listings, and information about the President's quilt project appear on page 5
-  A list of the quilts shared during our October meeting can be found on page 6
-  An announcement about the election and personal statements from the 2009 RMCQ Officer candidates appear on pages 7 through 9
-  Information on the voting procedure is included on page 10
-  A copy of the ballot that can be used to vote by mail or proxy appears on page 11



Fort Collins Senior Center

1200 Raintree Drive

Meeting registration starts at 6:00 P.M.

Business meeting begins at 6:45 P.M.



November Program - Putting the Frosting on the Quilt

You have finished your art quilt. It is beautiful but it needs a little bling. We have some suggestions for you to consider and some experts to show you how to add some special effects to your work of art. Here is our lineup:

- *Gwen Hatcher* will show you how puffy paint can add texture and a bit of color to emphasize the focal point of a quilt
- For bling personified, there is no one better with beads than *Vicki Carlson*. Come to see her latest concoction and learn the first steps in adding beads to your quilts
- *Nancy Tracy* will show you how a bit of handmade lace, tatting in this instance, can enhance a crazy quilt or add a touch of nostalgia to a period piece of work or add a little funk to something modern
- *Kay Jones* has a knack with tulle or netting that will give a subtle shaded effect, which is especially useful in making landscape pictures
- *Landreth Hamil* will be introducing designs and techniques from contemporary felting artists. Felting can be a fiber embellishment that is rich in color, texture and form. It is a versatile medium, easily adapted to most fiber surfaces including cotton. We will have materials to explore using this technique in nontraditional ways. This will be a hands-on exploration, where participants will apply fiber to partially developed art wall quilts.
- Misty Fuse™ can be used for, well, fusing but it has some other mysterious properties that make it useful as a decorative element. *Janet Pugh* will show you a few she has learned
- *Maxine Carlstedt* has been using oil paint sticks to transform and decorate fabric for several years. These big coloring sticks can be used for rubbing, stenciling and stamping.

Each person at the meeting will get a chance to see each demonstration. We will play it like musical chairs. After 10 or 15 minutes at one stop, a bell, whistle or some such signal will tell you it is time to move on to something else. If you time it right, you will learn seven ways to put frosting on your quilt.

Upcoming RMCQ Programs

December 8th 2008—Holiday Show and Tell and Installation of Officers Here is your chance to bring in your holiday quilts and fabric art projects— and we mean any and all holidays! Because we will not have a speaker this month, we are hoping for a lot of Show and Tell quilts from our members. We hope to see other, non-holiday quilts as well. This meeting will include a potluck dinner, so please contact *Rebecca Judson*, Hospitality Chair, at hospitality@r-m-c-q.org if you would be willing to help with the setup.

January 12th 2009—Melody Randol - Capturing Nature in Fabric Melody, a fiber artist and teacher from Loveland, returns for our First Anniversary meeting, to share her inspirations, her proc-

(Continued on page 3)

Upcoming RMCQ Programs (continued)

(Continued from page 2)

esses, and most of all, her wonderful fiber pieces. She will also teach a two-day workshop on her *Stencils and Sponges* technique. In this workshop, you will have your choice of images, either a tiger or a tree, with the stencil provided by Melody. The registration form and additional information about Melody's workshop are available on our website at www.r-m-c-q.org/files/workshop_melody_randol.pdf. You can find out more about Melody and her quilts by viewing her website at www.melodyquilts.com.

February 9th 2009—Carol Shinn Carol is a studio artist from Fort Collins, known internationally for her photo-realistic machine-stitched images. She teaches workshops across the U.S. and her pieces are in public and private collections, and are included in numerous contemporary quilt books written by U.S. and Canadian authors. Her website www.carolshinn.com will introduce you to her incredible images, produced totally by intricate threadwork.

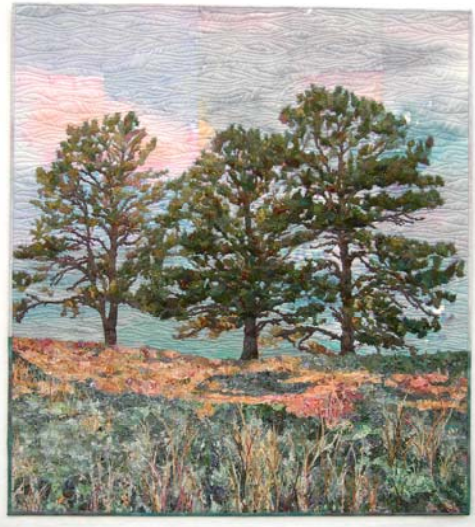
March 9th 2009—Annette Kennedy Annette, who lives in Longmont, is an increasingly well-known fiber artist, whose main focus is landscape and pictorial work based on her personal photographs. She uses raw-edge appliqué, stitching, beadwork, and dyed and painted fabric to produce her images, and then often paints the cottons or silks to enhance the images. This year, she will teach at International Quilt Festival in Houston for the first time, and recently won First Place in wall quilts at the American Quilter's Society show in Nashville, Tennessee. Annette will discuss her creative process as well as her painting techniques.

July 13th 2009—Debra Danko

August 10th 2009—Denise Labadie

September 14th 2009—Marta Amundson Marta will present *A Cowgirl's Journey in the Quilt World*.

October 12th 2009—Kate Cox Kate is a British textile artist now living in south-central Colorado. She will bring a trunk show and talk about the contrasts between her life as an art quilter in England and in the U.S.



Quilts by our January speaker, RMCQ member Melody Randol: *A New Dawn* (above) and *Granite & Grandeur* (below)



Information on upcoming RMCQ programs is available on our website at www.r-m-c-q.org/programs.html.

Upcoming Events

Sangre de Cristo Arts Center— Pueblo, Colorado, November 1st 2008 through January 17th 2009. *Altered Threads, Work by Front Range Contemporary Quilters*. Opening reception November 19th from 5:00 to 7:00 PM. More information available at www.sdc-arts.org.

Rocky Mountain Quilt Museum— Golden, Colorado, November 4th 2008 through January 31st 2009. *California Gold* in the Opal Frey Gallery and *Speaking in Cloth: 6 Quilters, 6 Voices* in the Eugenia Mitchell Gallery. For more information, see www.rmqm.org.

Handweaver's Guild of Boulder Show and Sale— December 4th through 9th, Boulder County Fairgrounds, Longmont, Colorado. There will be a selection of hand woven, knitted, quilted and hand-dyed items available for purchase. Jewelry and Christmas items will also be available. Free admission and free parking. More information is available at www.handweaversofboulder.org.



Mary Lee Bendolph, Gee's Bend Quilts and Beyond— November 14th through February 8th, Loveland Museum/Gallery, 503 N. Lincoln Avenue. More information is available at www.ci.loveland.co.us/Cultural_Services/cultural_services_museum_tempexh_upcoming.htm.

Denver National Quilt Festival— April 30th through May 3rd 2009, Denver Merchandise Mart. Entry forms available in December 2008. For more information, see www.quiltfest.com.

Annual Northern Colorado Weavers Guild Fiber Celebration— A juried exhibit to be held May 30th through July 12th 2009 at the Loveland Museum/Gallery, 503 N. Lincoln Avenue. Entry form deadline is February 15, 2009. See www.fortnet.org/ncwg for entry forms and details.

Fabric of Legacies— This annual exhibit will appear at the Lincoln Center, Fort Collins. Entries are likely to be due in March or April. Information will be posted on the Lincoln Center website (www.fcgov.com/lctix).

Information on upcoming events is also available on our website at www.r-m-c-q.org/quilting_info.html.

RMCQ Board Meetings

The RMCQ Board meets the last Thursday of every month at the REA building in Windsor. The next board meeting will be Thursday, November 20th at 6:30 PM. A list of our officers and committee chairs, along with contact information is available online at www.r-m-c-q.org/about_rmcq.html.

Please remember to check our website regularly at www.r-m-c-q.org for the latest news, meeting minutes, forms, and contact information for the board members and committee chairs. *Jean Boland* does a wonderful job of keeping the website up to date, but she needs your help to keep things current. Please contact her at website@r-m-c-q.org if you have information for the site.

Announcements

Barb Gardner won third place for her quilt *Blue Heaven* in the 13th Annual Lafayette Community Art Show. Her winning quilt was displayed at the Lafayette Library through November 1st.

Several RMCQ members had quilts juried into the exhibition *Altered Threads, Front Range Contemporary Quilters* at the Sangre de Cristo Arts Center in Pueblo: *Vicki Carlson, Gwen Hatchette, Patricia Joy, Phillipa Lack, Claudia Martin, Kit Robinson, and Louisa Smith*. More information about the exhibit can be found in the Upcoming Events section on page 4 of this newsletter, or online at www.sdc-arts.org.

The RMCQ '09 Calendar and quilts from each calendar page are being shown on the Featured Artist Page of the Make it Sew website, now through the end of the year. The artists featured are *Linda Hibbert, Patt Blair, Louisa Smith, Cookie Warner, Annette Kennedy, Gwen Hatchette, Sandy Jung, Maxine Carlstedt, Janet Pugh, Melody Randol, Vicki Carlson, Mary McCauley, Kit Robinson* and *Jeanie Sumrall-Ajero*. See them at www.makeitsew.biz. The pictures will be changing weekly.

Please notify the newsletter editor, *Janet Schramke* (newsletter2008@r-m-c-q.org), of any announcements, awards, entries accepted into shows, publications, or other items of interest so we can include them here. The next newsletter deadline is **Monday, November 24th**.



Please remember to sign up to bring a snack to share at one of our upcoming meetings. If you bring something to share, you are eligible for an additional entry for the door prizes that evening and for a special drawing at our December meeting. If you do bring something, remember to check in with *Rebecca Judson*, our Hospitality Chair, so she can enter your name in the drawings. Please contact Rebecca at hospitality@r-m-c-q.org if you would like more information or to sign up.

Class Listings

Computer Quilting — Is It for You?? Instructor: *Barb Gardner*. If you own a computer quilting program, this class will give you the confidence to explore it. If you don't own such a program, this class will give you a tour so you can decide if it will work for your designing needs. This class will meet Friday, November 14th from 10:00 AM to 2:00 PM at Great American Quilt Factory, 8970 E. Hampden in Denver. For more information, please see www.GreatAmericanQuilt.com or call (303) 740-6206.

Please submit information about upcoming classes taught by RMCQ members to *Janet Schramke* (newsletter2008@r-m-c-q.org) by the **November 24th** newsletter deadline.

President's Quilt Project

If you hurry, there is still time to contribute to the "top secret" President's quilt project. Because this project is a surprise for *Stephanie Patterson*, we cannot share the guidelines here. If you are interested in participating in the President's quilt project, please contact *Kit Robinson* for a free kit, including instructions. Kit's email is treasurer@r-m-c-q.org.

The contributions to the project have been coming in and we can't wait to see the rest! Please remember that we will need your completed projects by our November 10th meeting.

October Show and Tell

Title	Owner/Maker	Technique/Description/Inspiration
Bunny	Liz Hyatt	Value Workshop/Joan Sowada workshop
Remembering Klimt's Fulfillment	Dayne Packard/ Howard Stewart	Pieced and appliquéd, longarm quilting with variegated King Tut thread/Painting by Gustav Klimt, Howard adores Klimt's work
Untitled	Judy Cunningham	Fused, stitched, discharged fabric, stamping, collage
Untitled	Judy Cunningham	Knitted fabric purses/Lined with pocket and shoulder strap, contrasting fabric
Trellis II	Judy Cunningham	Traditional background with appliquéd (fused) flowers/ This was a small quilt started by Shirley Sander, and I transformed it and made it "mine"
Flowers/Collage	Judy Cunningham	Fused, paper, stitched, embellished
Tree of Hearts	Kit Robinson	Raw edge appliquéd, machine quilting/American Heart Association auction quilt, hosted by Meander Publishing
Walkway to Terry Lake	Kit Robinson	Raw edge appliquéd, machine quilting/A photo by my son, Alex, of the walkway across the street from my home
Grandma's Flower Garden	Joy Stark/Vicki Stark	Machine appliquéd/Appliquéd flowers, border children, grandchildren and great-grandchild hand prints/Flowers of my life
Untitled	Nancy Hallerman	Machine pieced and quilted/"Quilts of Valor" for injured soldiers
Painted Flowers	Marilyn Walter	Quilt painted with Stewart-Gill paints over stencil design, machine quilted/Wanted to see if they were really water-proof paints, so I had to make a whole quilt

We want to see lots of your quilts at our meetings! There are no restrictions on the types of quilts you can bring to share– quilts that have previously appeared at our Show and Tell have ranged in style from traditional to innovative, and quilts from all skill levels are welcome. Please remember to fill out a Show and Tell form and turn it in at the meeting so we can include information about your quilts. Show and Tell Forms are available at the meeting and on our website at www.r-m-c-q.org/files/RMCQ_show_n_tell_form.pdf.



2009 RMCQ Election

Many thanks to the Election Committee for their hard work contacting the RMCQ membership, preparing the slate of Officers, and deciding on a procedure for carrying out the election: *Carol Anderson, Barbara Cohen, Tory Fravel, Landreth Hamil and Nancy Tracy.*

As stated in our bylaws, the election of our 2009 Officers will take place as the first order of business at our November meeting. The information below and on the following pages was developed by the Election Committee. This information includes personal statements from the candidates, instructions for voting in person at the meeting, by mail, or by proxy, and the mail-in or proxy ballot, which appears as the last page of this newsletter. If you have any questions or concerns about the election, please contact a member of the Election Committee.



Personal Statements of 2009 Executive Committee Candidates

President: My name is *Cookie Warner* and I have volunteered to be your president for the 2009 year. I am very excited about this new challenge. I have been president of other organizations and served on many boards, but this all happened twenty some years ago, so I might be a little rusty. Everybody, of course, is telling me that this will be a piece of cake. I am already thinking of new ideas to help this group expand and grow. I know there are many of you who are relatively new to art quilting and finding ways to encourage you and heighten your self confidence is definitely on my list of things to do. Please feel free to contact me with any ideas you may have on ways to improve this organization. I stand ready, willing and able to serve you any way that I can.

Yours, Cookie

1st Vice President of Programs, Janet Pugh: I am a sewer since age 10, and have been a quiltmaker for 28 years now. Much of my learning has been from books and quilting magazines, as my background is medical science and I have had no formal art classes. I have designed most of my own quilts for about 6 or 7 years and am most interested in pieces which depict nature — must be my farm-girl background. My original designs have included a piece about hiking boots, a refrigerator door which opens to reveal the contents (a diet quilt which was juried into *Women of Taste* in 1997 in Oakland, California), my war with bindweed in my flower garden (won 1st place in a garden theme quilt competition by LNCQ about 2002), sumac leaves against blue sky, etc. I have a quirky sense of humor which I can blame on my Dad.

My priority for RMCQ is that our Guild provide a stimulating and supportive environment for quilters and fiber artists of all skill levels, as well as a place to safely share one's work and receive suggestions and encouragement. Offering programs and workshops which instruct and inspire is the vehicle which makes all of the above possible.

(Continued on page 8)

Personal Statements of 2009 Executive Committee Candidates (continued)

(Continued from page 7)

I would like to continue another year as Co-Vice President of Programs because I feel Maxine and I have begun a process which is not yet finished, and that we are establishing a foundation upon which the Guild can build the future. I feel our program and workshop choices are varied and valuable, and that future program committees can build upon the model we are trying to set.

I feel my personality is easy-going, but serious, and I can almost always get along with varying personalities. I think I have the respect of most people in the quilting world with whom I meet and interact.

2nd Vice President of Programs, Maxine Carlstedt: I'm a retired elementary teacher and principal, mother of three and grandmother of eight. I have always been interested in music and the visual arts. I wanted to be an art teacher but was dissuaded from that because in elementary school the first program cut when funding was scarce was the arts. I did however, take as many art courses as I could fit in and often ended up teaching art in my own classroom and in the school where I was principal just to keep the program alive. Now that I am retired it is my time to play so I'm embracing the artist within me. I have tried many other art media, I find working with fabric the most satisfying. I have always sewed clothing for my children and myself as well as making dolls, doll clothes, puppets, and items for home decoration. I began quilting in 1997 and have taken many workshops and gone to several international quilt shows. There are so many fantastic fiber artists producing wonderful works of art in our community and across the country. I can't always travel to work with them, so I would like to bring them to our guild.

There was such excitement at that first guild meeting in January, I want to keep that spirit alive. Many people worked hard to start this guild and it is important to me and many others that it continues. I would not like it to collapse because no one was willing to step forward to do the job of securing good programs. The programs are at the heart of the guild. Education, inspiration, and motivation are the things that help us to grow in our ability to express our creativity in our quilting.

I started like many in this guild as a traditional quilter and I still like doing that but I want to move from using someone else's pattern and color scheme to something that is my invention, my expression. I started by using my photos as the subject of my quilts. It isn't easy to begin with a blank piece of fabric. There are so many decisions to make along the way but with every workshop I take, every quilter who shares their journey, I get ideas and ways to improve my skills and recreate the vision in my mind to fabric. Programs, workshops, show and tell, small study groups, all these kinds of activities will help us explore contemporary ideas in quilting.

RMCQ means to me a group that will spark and support my efforts by sharing the journey in the use of fabric creatively.

Recording Secretary: I'm *Annette Miller*— please call me Annie. I've been making quilts for about 15 years but I still feel like I'm maybe one step past beginner. I make about 1-3 quilts per year. I usually have two goals for each quilt: 1) The fabric or design has to have an emotional meaning for me or an emotional message for the recipient and 2) I have to try something new or learn something from the process. I have made several landscape quilts and some abstract

(Continued on page 9)

Personal Statements of 2009 Executive Committee Candidates (continued)

(Continued from page 8)

quilts. I love the flexibility of a non-traditional quilt. I have dabbled with dyeing my own fabric. I'm so thrilled to find the RMCQ to broaden my quilting horizons and learn from others.

I've lived in Fort Collins since 1979. I work for the USDA and I've been married to my husband for 20 years. I have served as a secretary for a couple of other organizations. I'm a good "behind the scenes" person. I want to see the organization succeed and I want to pitch in where needed. I want to see the Guild continue to offer inspiring programs and helpful workshops.

The Guild can tap the potential of our members and encourage those members by continuing with the show and tell. Many people have quilts they have worked hard on but are timid about putting them in a formal quilt show. It's a great way to see a lot of quilts and techniques, and they are great conversation starters for those of us who are a little more shy.

To me, RMCQ means a group of quilters who are interested in making unique quilts that go beyond ordinary quiltmaking and use all kinds of techniques, colors, textures and patterns. RMCQ is a chance to share this interest with others and learn from each other.

Treasurer: My name is *Nancy Tracy*. I've lived in the Loveland/Fort Collins area for 16 years now, and I have a full-time job doing drafting work in engineering. Since I spend my days with numbers and technical work, quilting and other needlework create a balance in my days and have been a great creative outlet for me. I have been quilting on and off for around 20 years, but I have been sewing for about 35. Contemporary quilting is very new to me, but I see it as an exciting opportunity for me to discover my artistic side.

I like to be organized. Through my job as a drafter, I have learned to be the kind of person that makes sure that everything is in its proper place and that "my I's are dotted and my T's are crossed." I'm comfortable with numbers and am computer literate, and have experience both in a business and in a personal environment in maintaining and tracking financial information.

This guild has been a great source of ideas and inspiration for me this past year. I want to contribute to the guild in such a way that it will help the guild to continue and to grow.

I would love to see some mentoring and small groups organized. As I have talked with people this past year, I have seen that it's not uncommon for people to feel overwhelmed and afraid to show their work. A small group can be a "safer" environment when people are starting out, and also a good place to get feedback and encouragement. I also believe that having programs by artists who display their work and talk about their creative process is important. Sharing ideas and techniques encourages creative thinking in our members. I hope that we will see more information on new and innovative techniques.

RMCQ means that we strive to build on tradition and to go beyond tradition in quilting. RMCQ is a place to learn new techniques, foster new ideas, and encourage the creative development of our members.

Voting Procedure for the Election of RMCQ 2009 Officers

Voting at the November Meeting

Two people from the Election Committee will be at the door. They will have a list of all current members of the guild. This list will include an indication of whether any member has already voted by mail. If the member has not already voted, they will be given one copy of the voting form and a note will be made that they received it. The member can be issued a new copy of the form if and only if they return the old copy.

Voting forms are to be filled out and returned to the Election Committee before the program starts. This will give the members time to consider their choices and fill out the form during the pre-meeting social time and during guild business. Votes turned in to the Election Committee will be immediately put into the ballot box.

All proxy votes, mail-in votes, and votes submitted at the November meeting will be counted by the Election Committee during the program and announced after the program is over. The final results will be published in the December newsletter. All voting forms will be retained in a sealed envelope and given to the Secretary.

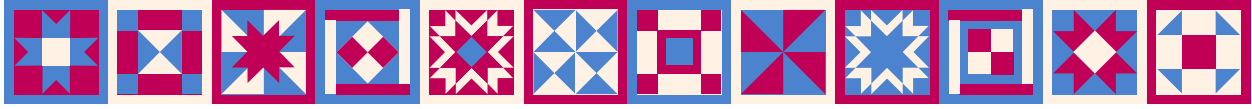
Proxy and Mail-in Voting

Members who cannot attend the November meeting can vote in one of two ways. They can either designate a proxy or they can mail in a voting form. The voting form is included on the next page of this newsletter. To vote by mail, the form must be printed out and completely filled out by hand in ink. We cannot accept forms that have been completed by typewriter or computer. The form should be mailed to the address given on the voting form. Forms must be received by November 8, 2008, or the vote will not be counted. Mail-in votes will be placed in the ballot box at the November guild meeting. To vote by proxy, the form must be printed out and completely filled out by hand in ink, then placed in a sealed envelope with the voter's signature written across the seal. We cannot accept forms that have been completed by typewriter or computer. The form will be submitted to the Election Committee at the November 10th guild meeting by a person who has been asked to bring it on the voter's behalf. This will take place at the door, and the envelope will be immediately placed into the ballot box.

Election Committee



**Happy
Thanksgiving!**



ROCKY MOUNTAIN CREATIVE QUILTERS ABSENTEE VOTING BALLOT

I, the undersigned member in good standing, will not be able to attend the November 2008 meeting of the Rocky Mountain Creative Quilters Guild.

2009 Slate of Officers

Cookie Warner
President

Maxine Carlstedt
1st Vice President

Janet Pugh
2nd Vice President

Annette Miller
Secretary

Nancy Tracy
Treasurer

I hereby designate my vote as:

- In favor of the listed slate of officers for 2009
- Against the listed slate of officers for 2009.

Signed: _____

Print name: _____

Date: _____

Any forms which are mailed must be mailed **FOR RECEIPT** to the following address **NO LATER THAN NOVEMBER 8, 2008**. Any forms received *through the mail* after that date will not be counted.

If you would prefer your vote to be anonymous, separate the ballot on the dotted line. Check your voting preference on the top half of the ballot. Seal that half in a blank envelope. Then sign the bottom half of the ballot. Seal both the first envelope (with your ballot in it) and the signed section in a second envelope. Mail that envelope to the address provided.

If not mailed, this form may be brought to the November 10, 2008 general guild meeting by a proxy.

Tory Fravel
RMCQ
1001 Strachan Drive #6
Fort Collins, CO 80525

